



HOUSE WITH INDEPENDENT APARTMENT – CHAMBÉSY

Zone | 1292 Chambésy | Reference : LM/KM 2386/4

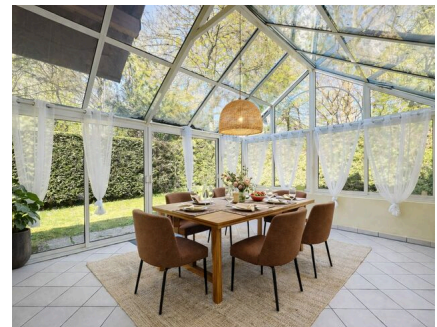
CHF 6,000.-/month

TABLE OF CONTENTS

Description page	3
Detailed characteristics and conveniences	5
Big pictures	6

HOUSE WITH INDEPENDENT APARTMENT – CHAMBÉSY

CH-1292 Chambésy | Zone | **CHF 6,000.-/month**



Agency: Millenium Properties
Ref: LM/KM 2386

Located in the heart of Chambésy, this charming semi-detached house enjoys a quiet and green environment, in the immediate vicinity of international organizations, international schools and all amenities.

Offering beautiful volumes, the property has **two independent entrances**, allowing for flexible use.

Main house

Ground floor:

- A beautiful bright living room with fireplace
- A spacious fully equipped kitchen
- A beautiful veranda accessible from the living room and kitchen, opening onto the garden
- A room or office
- A bathroom

Floor:

- Two beautiful rooms with access to a large terrace
- A bathroom

CHARACTERISTICS

Reference: **LM/KM 2386/4**

Type: **Attached house**

Availability: **To agree**

Rooms: **9**

Bedrooms: **4**

Bathrooms: **3**

Useful surface: **300 m²**

Ground surface: **500 m²**

- A galetas offering additional storage space

Outside

- A beautiful garden out of sight
- A double garage with mezzanine storage space
- An outdoor parking space

Rent: CHF 6,000 / month

Independent apartment (basement)

Also accessible via a separate entrance, this space can be entirely independent and offers many possibilities:

- A large room with kitchen
- Two versatile rooms
- A bathroom
- A toilet
- A laundry room / technical room
- A shelter

Rent: CHF 1,500 / month

Prime location in Chambésy with quick access to international organizations, international schools, airport and city center.

Contact:

Kari Marill-Hernandez
+41 79 572 19 97
km@milleniumproperties.ch

MILLENIUM PROPERTIES SA
Boulevard du théâtre 5, 1204 Geneva
+41 22 342 44 12
<https://www.milleniumproperties.ch>

CHARACTERISTICS

CH-1292 Chambésy | Zone | **CHF 6,000.-/month**

CHARACTERISTICS

Availability	To agree	Bathrooms	3
Type	Attached house	Ground surface	500 m²
Reference	LM/KM 2386/4	Useful surface	300 m²
Rooms	9	Interior parking	2
Bedrooms	4	Exterior parking	1

CONVENIENCES

INSIDE CONVENIENCES

- Garage
- Visitor parking space(s)

millenium

PROPERTIES

INTERIOR VIEW



millenium

PROPERTIES







millenium

PROPERTIES



millenium

PROPERTIES



millenium

PROPERTIES

EXTERIOR VIEW

