



EXCEPTIONAL HOUSE NEAR COLLEGE DU LÉMAN IN VERSOIX

Zone | 1290 Versoix | Reference : KM 2344/9

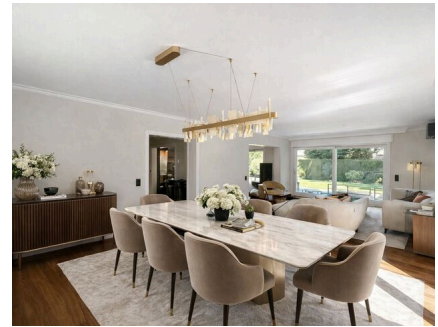
CHF 14,200.-/month

TABLE OF CONTENTS

Description page	3
Detailed characteristics and conveniences	5
Big pictures	6

EXCEPTIONAL HOUSE NEAR COLLEGE DU LÉMAN IN VERSOIX

CH-1290 Versoix | Zone | **CHF 14,200.-/month**



Agency : Millenium Properties
Ref : KM 2344

Located in the very heart of Versoix, in immediate proximity to the prestigious Collège du Léman and just a short walk from the lake, this magnificent high-standard house offers generous volumes, comfort, and a quality residential environment-ideal for family living.

Ground Floor:

- Entrance hall
- Fully equipped kitchen
- Spacious and bright living room
- Dining room
- Bedroom
- Guest WC

First Floor:

- Two bedrooms
- Master suite with walk-in dressing room and en-suite bathroom
- Dressing room
- Bathroom
- Shower room

Basement:

CHARACTERISTICS

Reference: **KM 2344/9**

Type: **House**

Availability: **To agree**

Rooms: **8**

Bedrooms: **5**

Bathrooms: **5**

Living area: **300 m²**

Useful surface: **430 m²**

Parking spaces: **Yes, obligatory**

millenium

PROPERTIES

- Multi-purpose room
- Shower room
- Dressing room
- Laundry room
- Two cellars

Attic:

- Storage space

Annex:

- Small independent annex comprising two rooms and a bathroom

Exterior:

- Garden
- Terrace

This exceptional property, with its high-end features and prime location, offers an ideal living environment close to all amenities and within walking distance of the lake.

Rent: CHF 14,200

Contact :

Kari Marill-Hernandez
+41 79 572 19 97
km@milleniumproperties.ch

MILLENIUM PROPERTIES
Boulevard du théâtre 5, 1204 Genève
<https://www.milleniumproperties.ch>
+41 22 342 44 12

CONTACT FOR VISITING

Mrs. Kari Marill-Hernandez
E-mail : km@milleniumproperties.ch
Mobile : +41 79 572 19 97

CHARACTERISTICS

CH-1290 Versoix | Zone | **CHF 14,200.-/month**

CHARACTERISTICS

Availability	To agree	Condition of the property	Very good
Type	House	Living area	300 m²
Reference	KM 2344/9	Useful surface	430 m²
Rooms	8	Parking spaces	Yes, obligatory
Bedrooms	5	Interior parking	2
Bathrooms	5	Exterior parking	4
Number of toilets	5		

CONVENIENCES

NEIGHBOURHOOD

- Villa area
- Park
- Green
- Lake
- Harbour
- Residential area
- Shops/Stores
- Bank
- Post office
- Restaurant(s)
- Pharmacy
- Railway station
- Bus stop
- Highway entrance/exit
- Nursery
- Preschool
- Primary school
- Secondary school
- International schools

OUTSIDE CONVENIENCES

- Annex
- Gardenhouse

EXPOSURE

- Good

millenium

PROPERTIES

PICTURE(S)



millenium

PROPERTIES



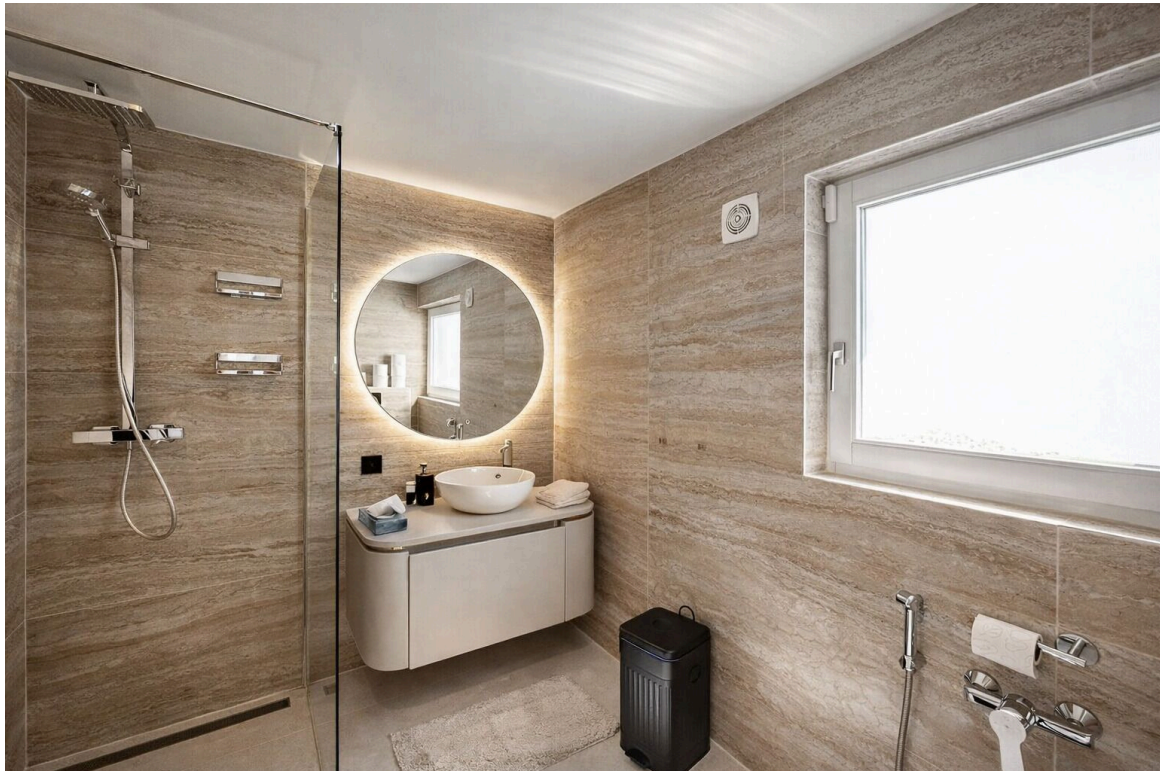
millenium

PROPERTIES



millenium

PROPERTIES



millenium

PROPERTIES



millenium

PROPERTIES



millenium

PROPERTIES

