



FAMILY HOME WITH GARDEN IN BELLEVUE

ZONE | 1293 Bellevue | Reference : LM/KM 2415/1

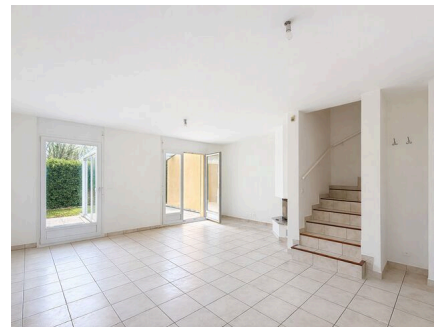
CHF 6,500.-/month

TABLE OF CONTENTS

| | |
|---|---|
| Description page | 3 |
| Detailed characteristics and conveniences | 5 |
| Big pictures | 6 |

FAMILY HOME WITH GARDEN IN BELLEVUE

CH-1293 Bellevue | ZONE | CHF 6,500.-/month



Agency: Millenium Properties
Ref : LM/KM 2415

Located in Bellevue, in a quiet and green residential area, this gable villa enjoys a sought-after location, close to international organizations, the airport and the main communication routes.

The house benefits from beautiful natural light and a pleasant private garden.

Functional and well-arranged, it offers comfortable living spaces, suitable for family life.

Distribution:

Ground floor:

- Entrance hall
- Closed kitchen
- Living/dining room with fireplace
- Visitor toilet
- Veranda

Floor:

- Three rooms
- Bathroom

CHARACTERISTICS

Reference: **LM/KM 2415/1**

Type: **House**

Availability: **To agree**

Rooms: **5**

Bedrooms: **3**

Bathrooms: **3**

Living area: **~ 140 m²**

Ground surface: **~ 800 m²**

Latest renovations: **2026**

- Separate WC

Basement:

- Multipurpose room
- Shower room
- Gym/tv room/play room etc...
- Laundry room (washing machine and dryer)
- Cave

Rent: CHF 6'500.-

A rare gem, ideally located, combining tranquility and proximity to amenities.

Contact:

Kari Marill-Hernandez
+41 79 572 19 97
km@milleniumproperties.ch

MILLENIUM PROPERTIES
+41 22 342 344 12
Boulevard du théâtre 5, 1204 Geneva
<https://www.milleniumproperties.ch>

CONTACT FOR VISITING

Mrs. Kari Marill-Hernandez
E-mail : km@milleniumproperties.ch
Mobile : +41 79 572 19 97

CHARACTERISTICS

CH-1293 Bellevue | ZONE | **CHF 6,500.-/month**

CHARACTERISTICS

| | | | |
|--------------|---------------------|---------------------------|----------------------------|
| Availability | To agree | Latest renovations | 2026 |
| Type | House | Condition of the property | Good |
| Reference | LM/KM 2415/1 | Living area | ~ 140 m² |
| Rooms | 5 | Ground surface | ~ 800 m² |
| Bedrooms | 3 | Interior parking | 1 |
| Bathrooms | 3 | Exterior parking | 1 |

PICTURE(S)













millenium

PROPERTIES

