



## **FAMILY HOME WITH GARDEN IN BELLEVUE**

ZONE | 1293 Bellevue | Reference : LM/KM 2455/2

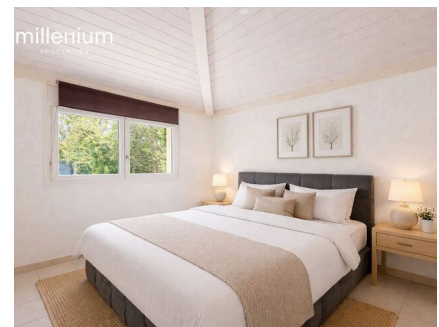
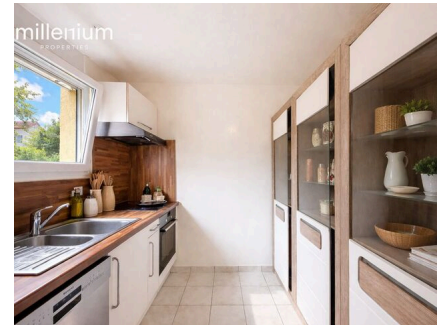
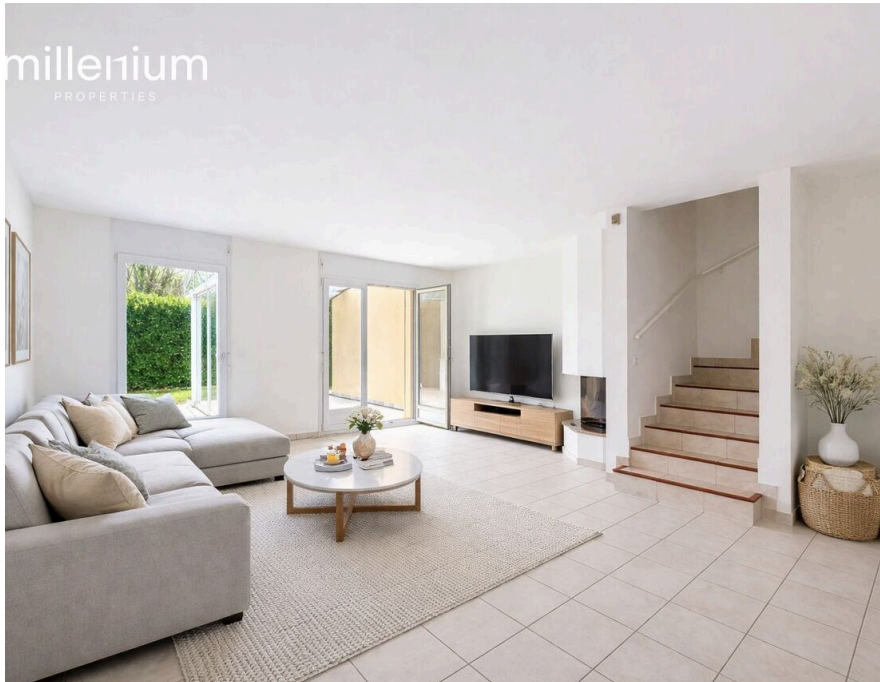
**CHF 5,500.-/month**

## TABLE OF CONTENTS

Description page	3
Detailed characteristics and conveniences	5
Big pictures	6

## FAMILY HOME WITH GARDEN IN BELLEVUE

CH-1293 Bellevue | ZONE | CHF 5,500.-/month



Agency: Millenium Properties  
Ref : LM/KM 2455

Located in Bellevue, in a quiet, green residential neighborhood, this semi-detached villa enjoys a sought-after location near international organizations, the airport, and major transportation routes.

The home benefits from plenty of natural light and a pleasant private garden.

Functional and well-designed, it offers comfortable living spaces suited to family life.

Layout:

Ground Floor:

Entrance hall  
Separate kitchen  
Living/dining room with fireplace  
Guest restroom  
Veranda

First Floor:

Three bedrooms  
Bathroom  
Separate restroom

### CHARACTERISTICS

Reference: **LM/KM 2455/2**

Type: **House**

Availability: **To agree**

Rooms: **5**

Bedrooms: **3**

Bathrooms: **3**

Living area: **~ 140 m<sup>2</sup>**

Ground surface: **~ 800 m<sup>2</sup>**

Latest renovations: **2026**

# millenium

PROPERTIES

Basement:

Multi-purpose room

Shower room

Gym/TV room/playroom, etc.

Laundry room (washer and dryer)

Cellar

Rent: CHF 5,500.-

A rare property, ideally located, combining tranquility with proximity to amenities.

Contact:

Kari Marill-Hernandez

+41 79 572 19 97

km@milleniumproperties.ch

MILLENIUM PROPERTIES

+41 22 342 344 12

Boulevard du théâtre 5, 1204 Geneva

<https://www.milleniumproperties.ch>

## **CONTACT FOR VISITING**

Mrs. Kari Marill-Hernandez

E-mail : km@milleniumproperties.ch

Mobile : +41 79 572 19 97

## CHARACTERISTICS

CH-1293 Bellevue | ZONE | **CHF 5,500.-/month**

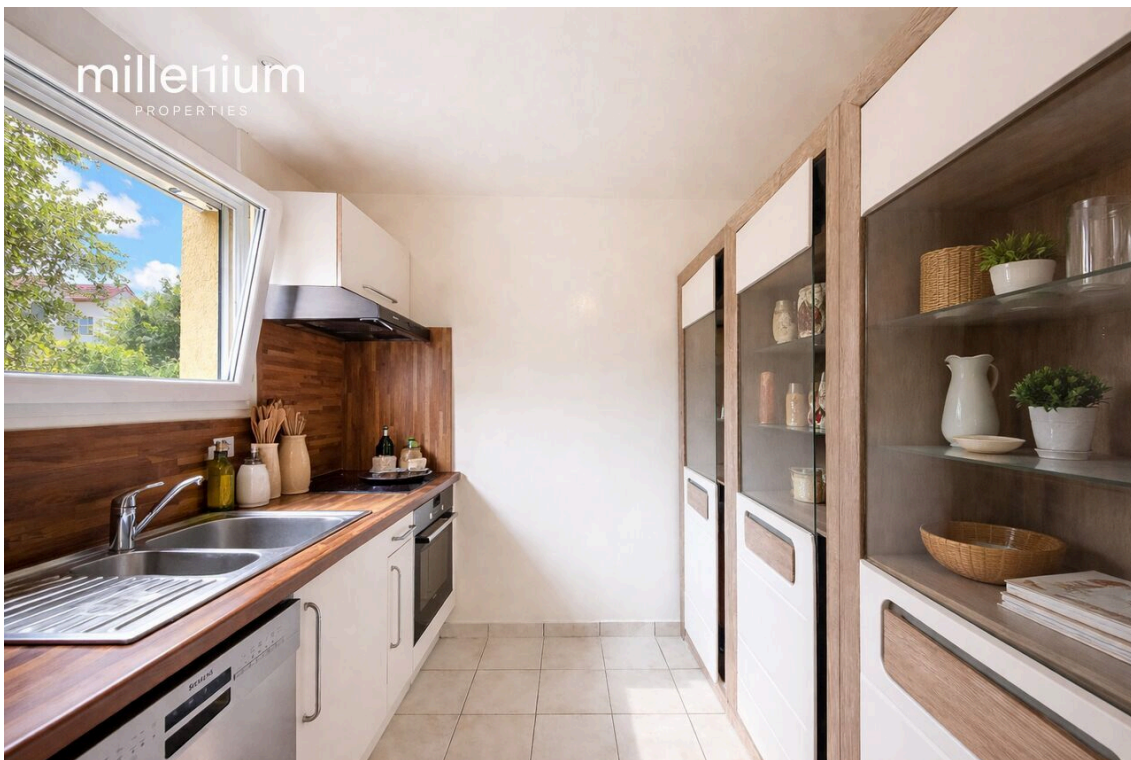
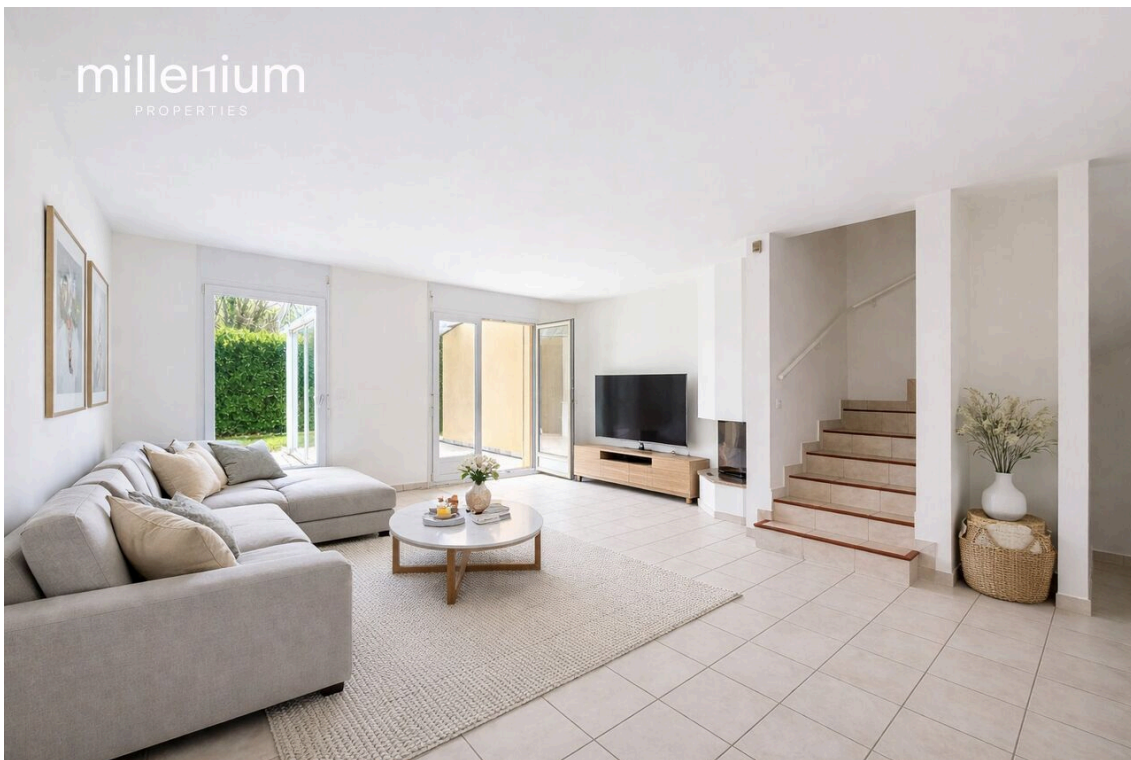
### CHARACTERISTICS

Availability	<b>To agree</b>	Latest renovations	<b>2026</b>
Type	<b>House</b>	Condition of the property	<b>Good</b>
Reference	<b>LM/KM 2455/2</b>	Living area	<b>~ 140 m<sup>2</sup></b>
Rooms	<b>5</b>	Ground surface	<b>~ 800 m<sup>2</sup></b>
Bedrooms	<b>3</b>	Interior parking	<b>1</b>
Bathrooms	<b>3</b>	Exterior parking	<b>1</b>

# millenium

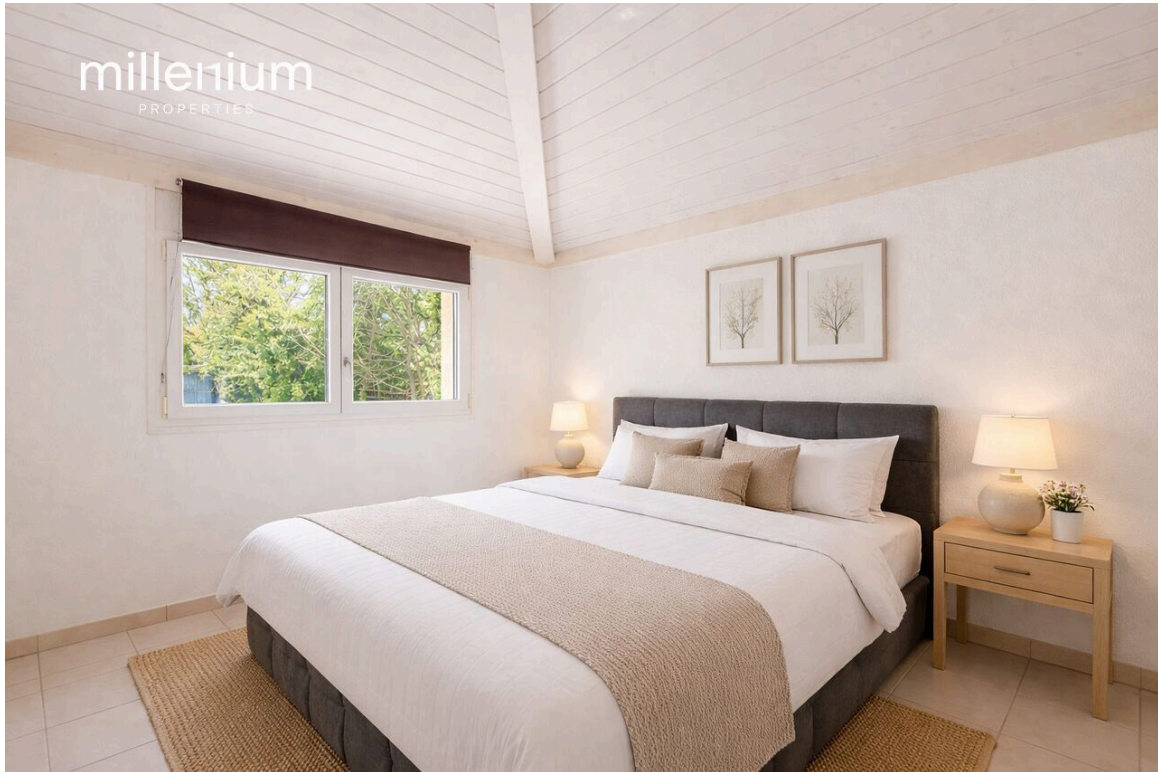
PROPERTIES

PICTURE(S)



# millenium

PROPERTIES



# millenium

PROPERTIES

