



MODERN 5P HOUSE IN GRAND SACONNEX

zone | 1218 Le Grand-Saconnex | Reference : LM/SCH 2485/1

CHF 5,500.-/month

TABLE OF CONTENTS

Description page	3
Detailed characteristics and conveniences	5
Big pictures	6

MODERN 5P HOUSE IN GRAND SACONNEX

CH-1218 Le Grand-Saconnex | zone | CHF 5,500.-/month



Agency: Millenium Properties
Ref: LM/SCH 2485

Located in a wooded environment, this very beautiful semi-detached villa with a living area of 165 m² is composed as follows:

Ground floor:

- An entrance hall with wardrobe.
- A guest toilet.
- A fully equipped modern kitchen open to the living room.
- A living room with fireplace/dining room opening onto the garden. First

floor:

- 2 bedrooms (possibility of making a third bedroom)
- A bathroom with bath and WC.
- A separate WC. Attic:
- A very large room that can be used as a bedroom, office...

Basement

:

- A large room (25m²) that can be used as a bedroom, office, games room, sports room...
- A shower room with WC.
- A laundry room.
- A storeroom.

CHARACTERISTICS

Reference: **LM/SCH 2485/1**

Type: **House**

Availability: **01.07.2026**

Rooms: **6.5**

Bedrooms: **4**

Bathrooms: **2**

Living area: **150 m²**

Useful surface: **165 m²**

Ground surface: **250 m²**

millenium

PROPERTIES

An outdoor parking space and a garage complete this property.

In addition, the house offers a beautiful wooded garden (400 m²).

This house is ideally located 3 minutes from the Place des Nations Unies, school, shops...

Rent: **CHF5'500**/ month

Contact .

Rental Service
+41 78 335 55 00
sch@milleniumproperties.ch

MILLENIUM PROPERTIES
Boulevard du théâtre 5, 1204 Geneva
<https://www.milleniumproperties.ch>
+41 22 342 44 12

CONTACT FOR VISITING

Mr. Stéphane Hernandez
E-mail : sch@milleniumproperties.ch
Mobile : +41 78 335 55 00

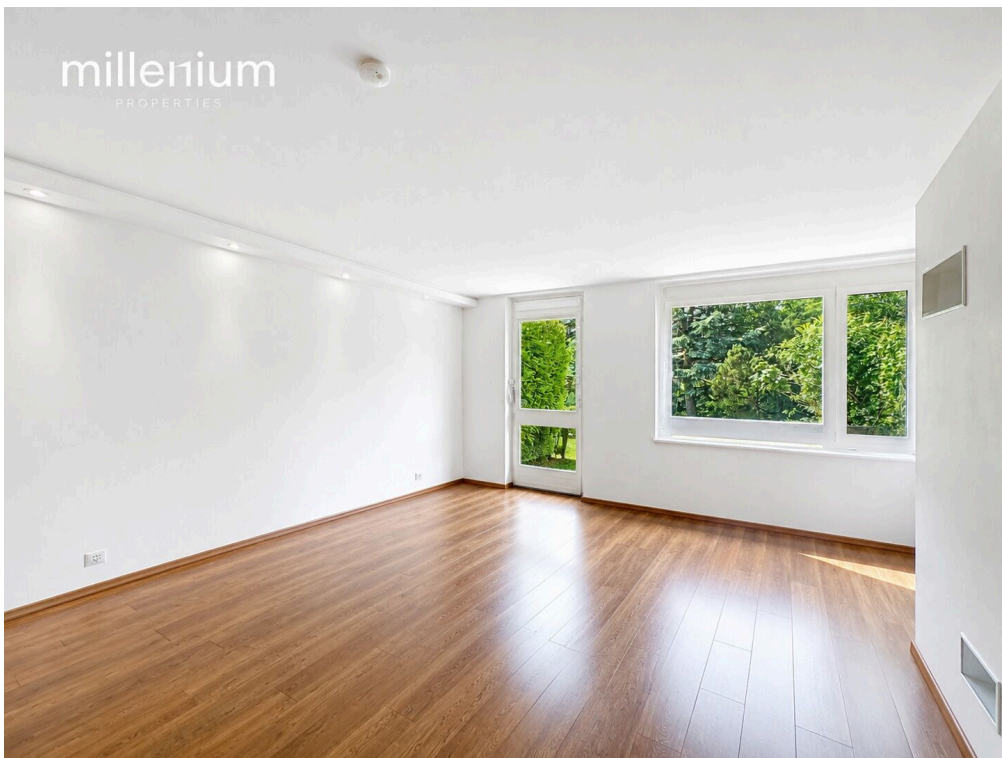
CHARACTERISTICS

CH-1218 Le Grand-Saconnex | zone | **CHF 5,500.-/month**

CHARACTERISTICS

Availability	01.07.2026	Condition of the property	Good
Type	House	Standing	Standard
Reference	LM/SCH 2485/1	Living area	150 m²
Rooms	6.5	Ground surface	250 m²
Bedrooms	4	Useful surface	165 m²
Bathrooms	2	Interior parking	1
Number of toilets	3	Exterior parking	1

PICTURE(S)



millenium

PROPERTIES



millenium

PROPERTIES



millenium

PROPERTIES

