

millenium

PROPERTIES



COWORKING OFFICES IN THE HEART OF THE AIRPORT'S ECONOMIC HUB

zone | 1216 Cointrin | Reference : SCH 2429

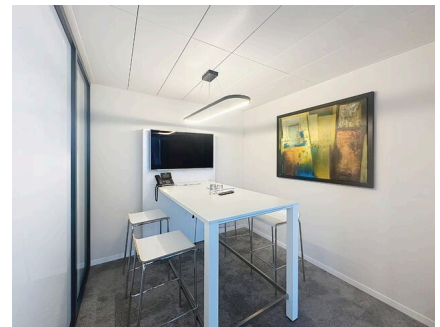
CHF 1,550.-/month

TABLE OF CONTENTS

| | |
|---|---|
| Description page | 3 |
| Detailed characteristics and conveniences | 5 |
| Big pictures | 6 |

COWORKING OFFICES IN THE HEART OF THE AIRPORT'S ECONOMIC HUB

CH-1216 Cointrin | zone | **CHF 1,550.-/month**



Agency: Millenium Properties
Ref: SCH 2429

Located in Pré-Bois, this building offers excellent services that combine comfort, elegance and efficiency at the heart of the airport's economic hub.

22 to 25 m² coworking office space in a high-end building.

3 office space for rent :

Office 1 (25m²) – 1,900 CHF per month.
Office 2 -(24 m²)- 1,800 CHF per month.
Office 3-(22 m²) – 1,550 CH per month.

Parking space available additionally in the basement.

An equipped kitchen with dining area and a large conference room complete this space.

The offices are rented furnished, with Wi-Fi and cleaning included.

Rental Service

+41 78 335 55 00
sch@milleniumproperties.ch

CHARACTERISTICS

Reference: **SCH 2429**

Type: **Office**

Availability: **Immediate**

millenium

PROPERTIES

MILLENIUM PROPERTIES SA
Boulevard du théâtre 5, 1204 Geneva
<https://www.milleniumproperties.ch>
+41 22 342 44 12

CONTACT FOR VISITING

Mr. Stéphane Hernandez
E-mail : sch@milleniumproperties.ch
Mobile : +41 78 335 55 00

CHARACTERISTICS

CH-1216 Cointrin | zone | **CHF 1,550.-/month**

CHARACTERISTICS

| | | | |
|--------------|------------------|-----------|-----------------|
| Availability | Immediate | Reference | SCH 2429 |
| Type | Office | | |

CONVENIENCES

NEIGHBOURHOOD

- Business Center
- Post office
- Railway station
- Shops/Stores
- Restaurant(s)
- Bus stop
- Bank
- Pharmacy
- Tram stop

PICTURE(S)



millenium

PROPERTIES

