



## **FAMILY HOME WITH GARDEN IN BELLEVUE**

ZONE | 1293 Bellevue | Référence : LM/KM 2455/2

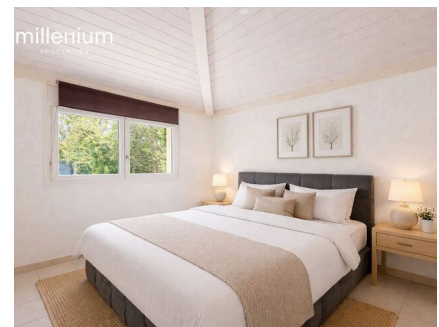
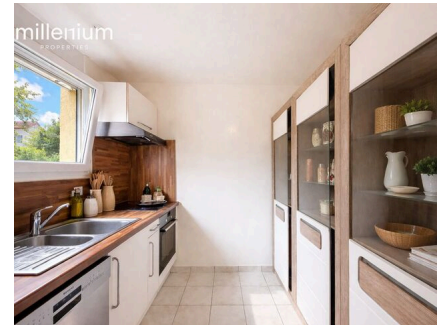
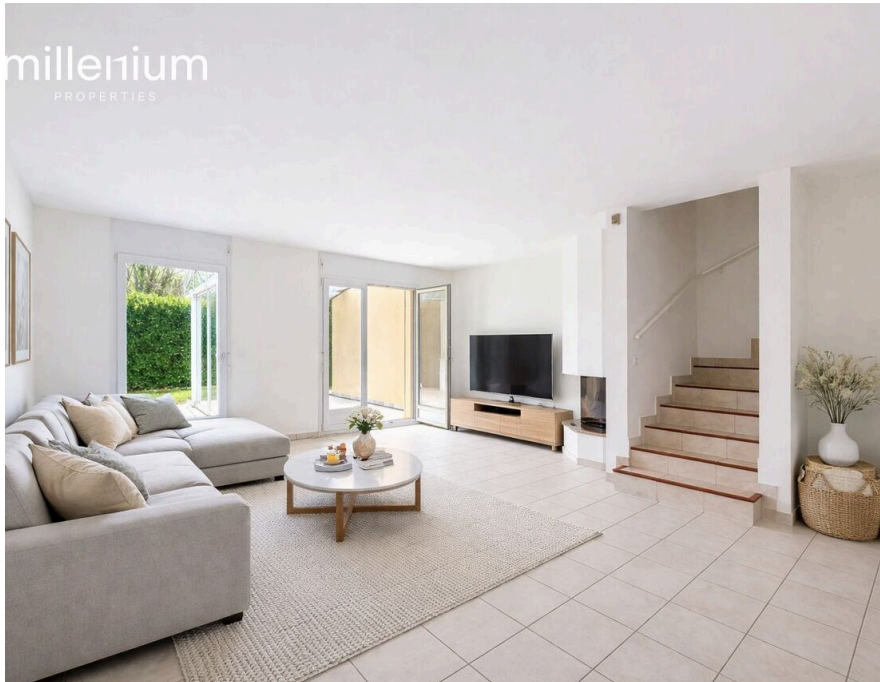
**CHF 5'500.-/mois**

## TABLE DES MATIÈRES

Page de description	3
Caractéristiques détaillées et commodités	5
Grandes images	6

## FAMILY HOME WITH GARDEN IN BELLEVUE

CH-1293 Bellevue | ZONE | CHF 5'500.-/mois



Agence: Millenium Properties  
Réf : LM/KM 2455

Located in Bellevue, in a quiet, green residential neighborhood, this semi-detached villa enjoys a sought-after location near international organizations, the airport, and major transportation routes.

The home benefits from plenty of natural light and a pleasant private garden.

Functional and well-designed, it offers comfortable living spaces suited to family life.

Layout:

Ground Floor :  
Entrance hall  
Separate kitchen  
Living/dining room with fireplace  
Guest restroom  
Veranda

First Floor :  
Three bedrooms  
Bathroom  
Separate restroom

### CARACTÉRISTIQUES

Référence: **LM/KM 2455/2**

Type: **Maison**

Disponibilité: **A convenir**

Pièces: **5**

Chambres: **3**

Sanitaires: **3**

Surface habitable: **~ 140 m<sup>2</sup>**

Surface terrain: **~ 800 m<sup>2</sup>**

Dernières rénovations: **2026**

# millenium

PROPERTIES

Basement :

Multi-purpose room

Shower room

Gym/TV room/playroom, etc.

Laundry room (washer and dryer)

Cellar

Rent: CHF 5,500.-

A rare property, ideally located, combining tranquility with proximity to amenities.

Contact :

Kari Marill-Hernandez

+41 79 572 19 97

km@milleniumproperties.ch

MILLENIUM PROPERTIES

+41 22 342 344 12

Boulevard du théâtre 5, 1204 Genève

<https://www.milleniumproperties.ch>

## **CONTACT VISITE**

Madame Kari Marill-Hernandez

E-mail : km@milleniumproperties.ch

Mobile : +41 79 572 19 97

## CARACTÉRISTIQUES

CH-1293 Bellevue | ZONE | **CHF 5'500.-/mois**

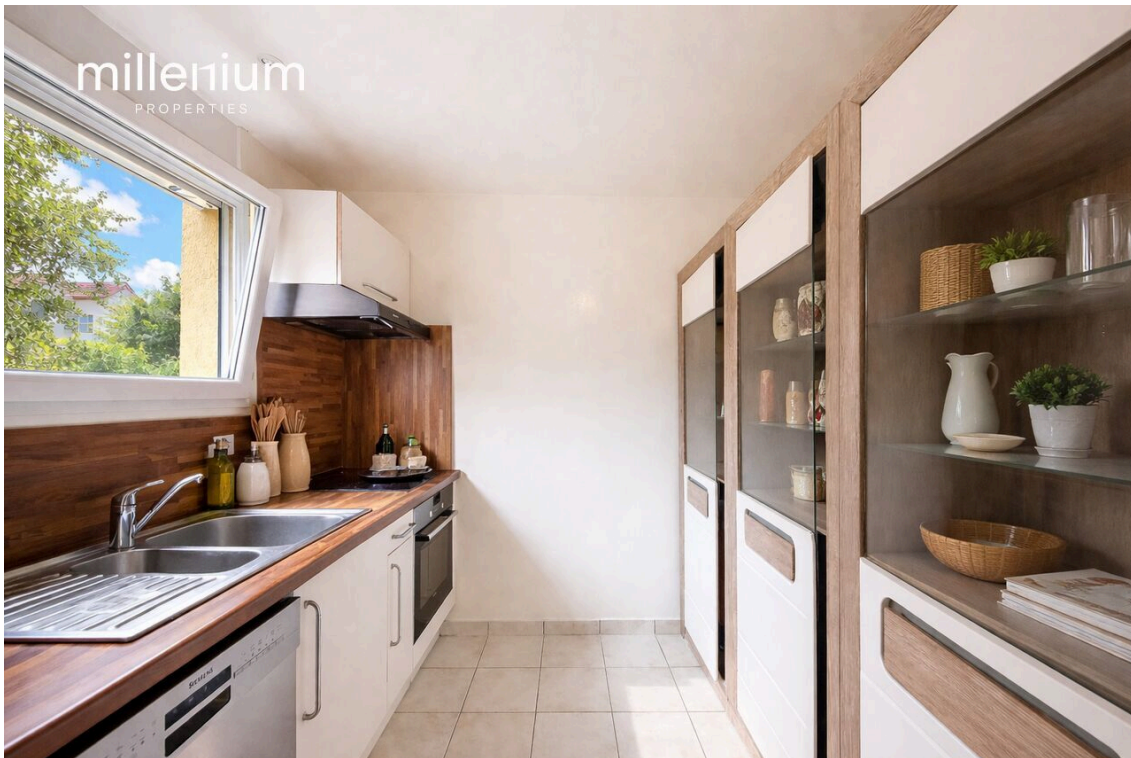
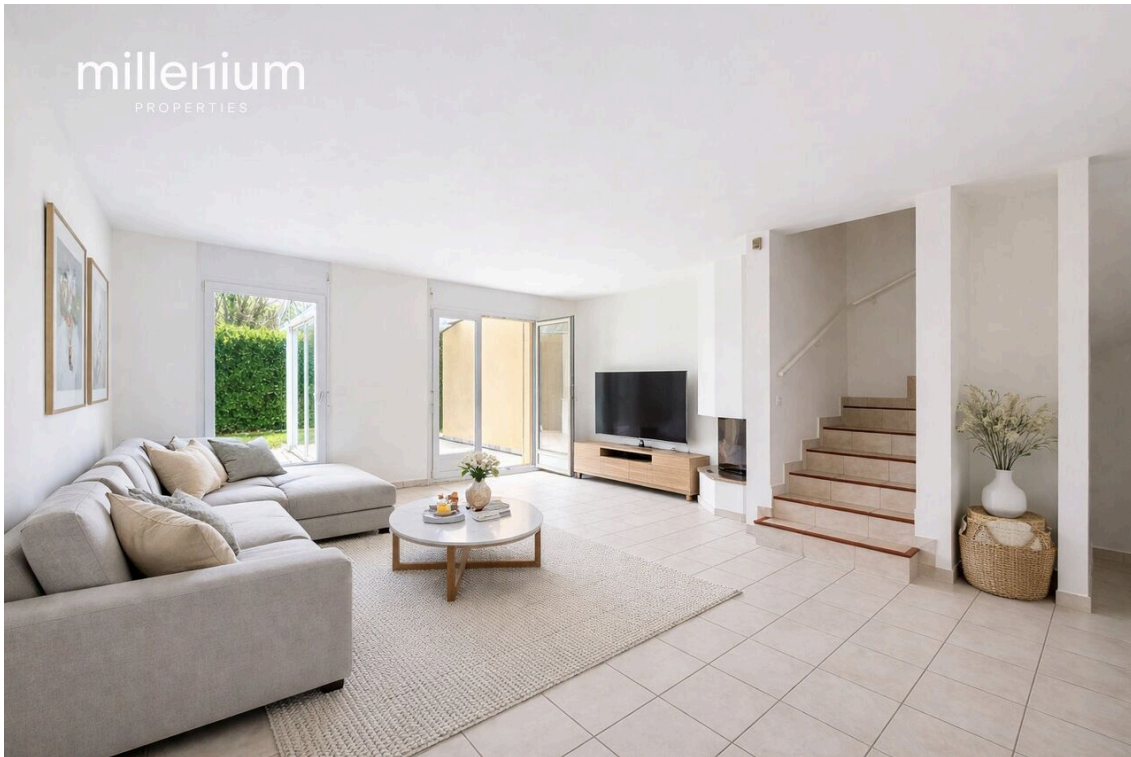
### CARACTÉRISTIQUES

Disponibilité	<b>A convenir</b>	Dernières rénovations	<b>2026</b>
Type	<b>Maison</b>	Etat du bien	<b>Bon</b>
Référence	<b>LM/KM 2455/2</b>	Surface habitable	<b>~ 140 m<sup>2</sup></b>
Pièces	<b>5</b>	Surface terrain	<b>~ 800 m<sup>2</sup></b>
Chambres	<b>3</b>	Place de parc intérieure	<b>1</b>
Sanitaires	<b>3</b>	Place de parc extérieure	<b>1</b>

# millenium

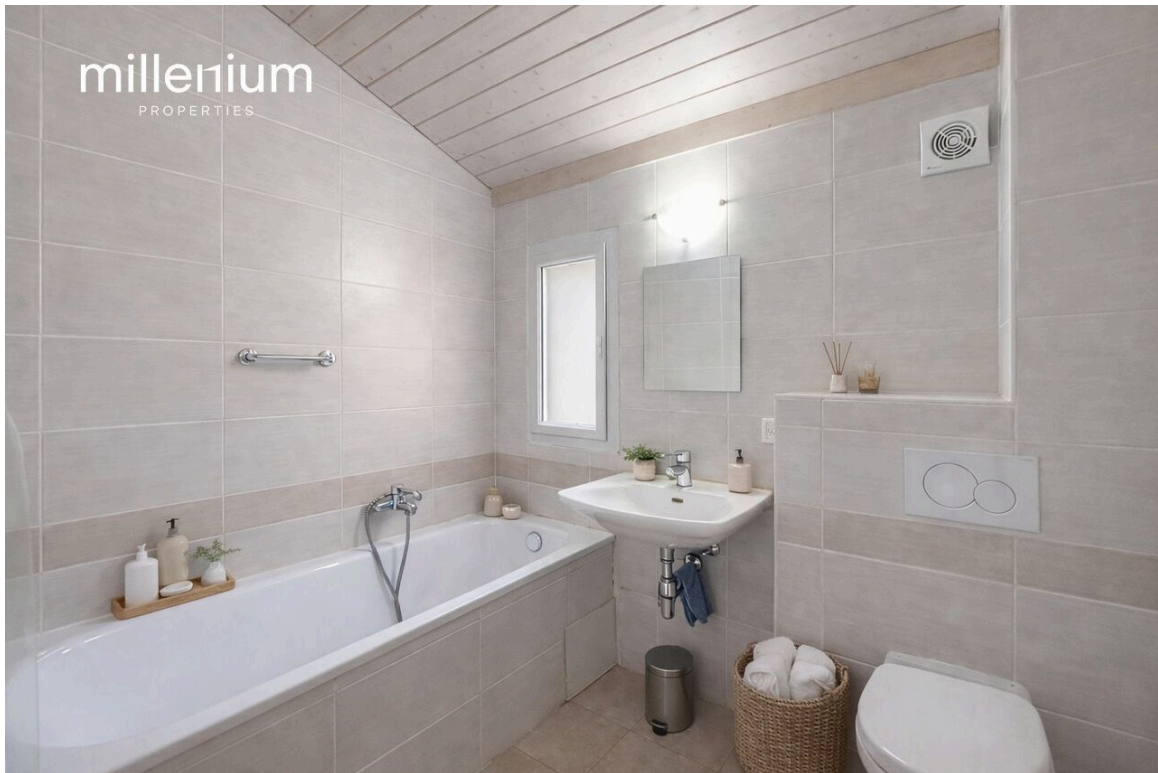
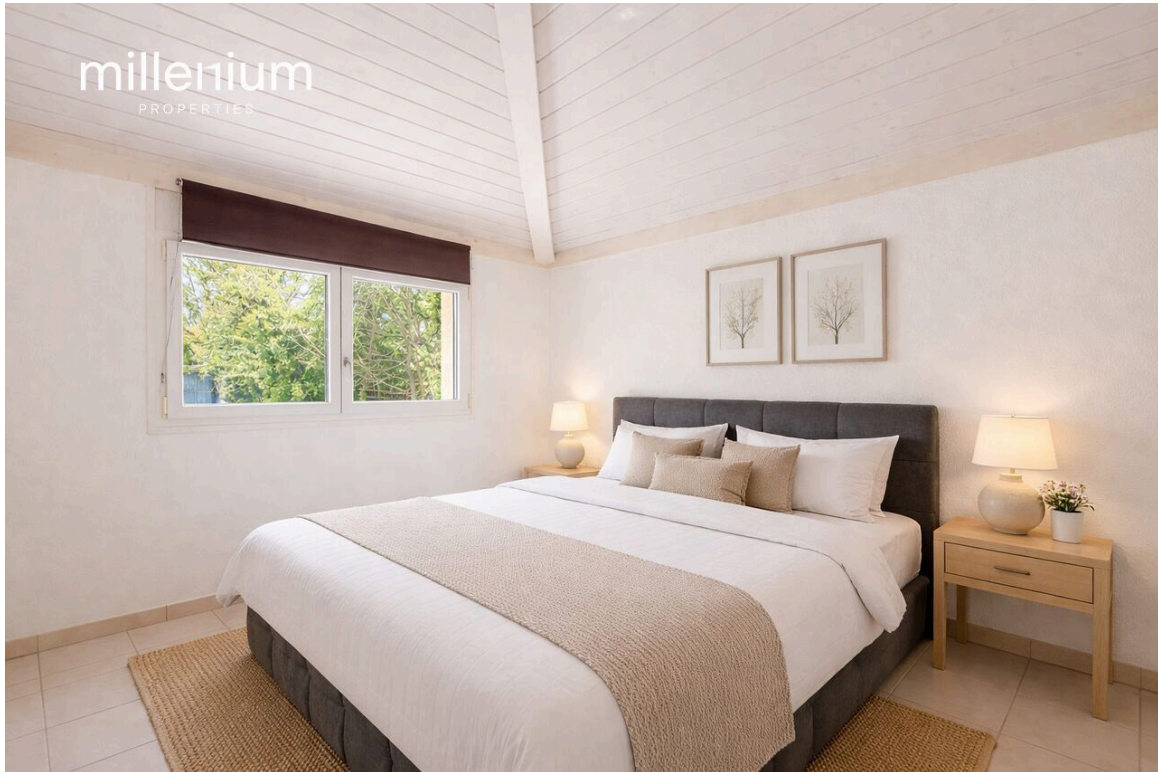
PROPERTIES

PHOTO(S)



# millenium

PROPERTIES



# millenium

PROPERTIES

